

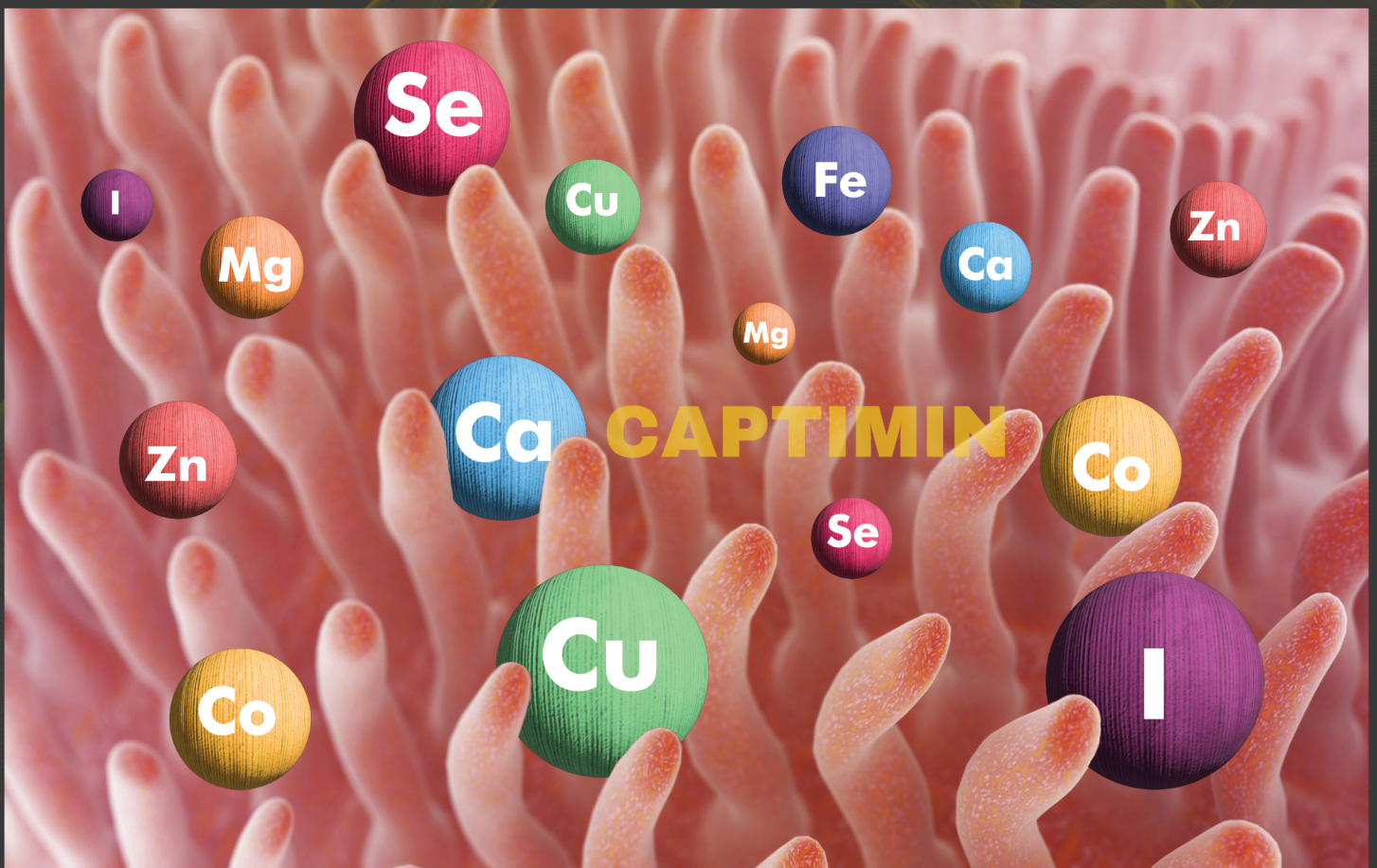
# CAPTIMIN

## Bioavailability and Profitability

Selective form of trace minerals with enhanced bioavailability

Chelated minerals are minerals that have been combined chemically with amino acids to form "complexes. Chelated minerals are used for supporting normal growth, stabilizing bipolar disorder, building strong muscles and bones, and improving immune system function and overall health.

Essential minerals are destroyed during the digestion process due to interactions with other components of feed. In feed it is the optimum way to ensure protection and absorption of minerals through the intestinal walls into the blood stream and reaching various organ to perform various physiological functions without interruption.



CAPTIMIN formulated with high bioavailability minerals mix to deliver the nutrients required by the birds. CaptiMin excellent stability, reliability, flow ability and better bio availability.

CAPTIMIN bioavailability has been enhanced by increasing the surface area of respective minerals by making their nano-particles. Animal gets sufficient minerals in their daily diet and optimally maintain their overall health condition and performs well.



## Benefits in Layers and Breeders

- It improves fertility , hatchability and egg production in layer birds
- Helps to alleviate oxidative stress as well as heat Stress
- It improves the egg weight with significant reduction in egg breakage without compromising the feed efficiency and egg shell quality in older laying birds.
- Prevents mineral deficiency symptoms liver disorders production fluctuations general mortalities.
- It also plays a vital role in egg production growth, body weight, digestion, disease resistance.

## Benefits in Broilers

- **Captimin** lymphoid organ weights, apparent digestibility and bone mineralization.
- **Captimin** allows the birds to reach its genetic growth potential and prevent clinical deficiencies.
- **Captimin** decreases Mortality and improved longevity.
- Captimin helps to alleviate oxidative stress as well as heat Stress in broiler.
- It is Involved in anti-Oxidative defence system, protein metabolism and bone formation as superoxide dismutase transferases, hydrolases and lygases.

## Composition Each 1KG Contains

Zinc	: 80 grams	Iodine	: 1 gram
Copper	: 15 grams	Selenium	: 0.5 grams
Manganese	: 80 grams	Calcium Carbonate	: QS
Iron	: 40 grams		

*Not for human, Cat & Dog*

*Animal Feed Supplement*

The product is free Chloramphenicol, Nitrofurantoin, Antibiotics, Melamine, By product of swine/bovine & other genetically modified organism

## Dosage

Broiler : 500 grams - 1 kg per Ton of Feed.

Layer : 500 grams - 1 kg per Ton of Feed.

### Product of India

Manufactured and Marketed by

**Biozona**

**India Private Limited**

No 11, VOC Street, Ponmalaipatti,  
Tiruchirappalli - 620004, Tamilnadu,  
India.

biozonaahc@gmail.com

+91 9790155126

www.biozona.in